

MDR14E



Features :

- Fanless system delivers a virtually silent operation and requires less maintenance
- Piggy-back to LCD monitor to become a DVR-Combo
- Best idea for wiring-cost saving through Balun application
- Duplex operation with half-D1 resolution recording
- Direct VGA Output @ 1280x1024 Pixels
- Available in black, red, yellow and blue
- Serviceable for custom-labeling



Applications :

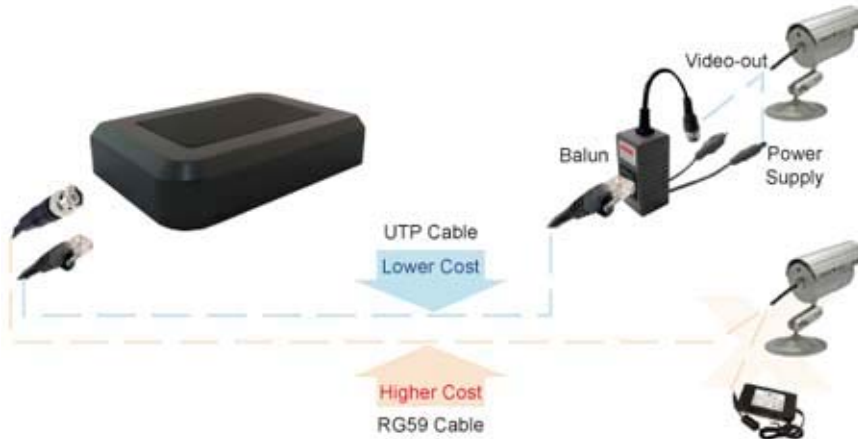
• The Perfect Space-Saving DVR

The elegant and slim design of Panacom's Mini DVR is a perfect space-saving solution to de-clutter your workspace and an aesthetic addition to your office and home.



- **Wiring-cost Savings over Conventional Wiring Systems**

The Mini DVR offers RJ45 connector which integrates the video signal and camera power in one cable. It allows connecting DVR and cameras by using UTP cable instead of RG59 cable through the Balun. The best benefit for installer is the wiring-cost saving from RG59 cable and power supply device is replaced by only one UTP cable, it also accelerates the installation time.

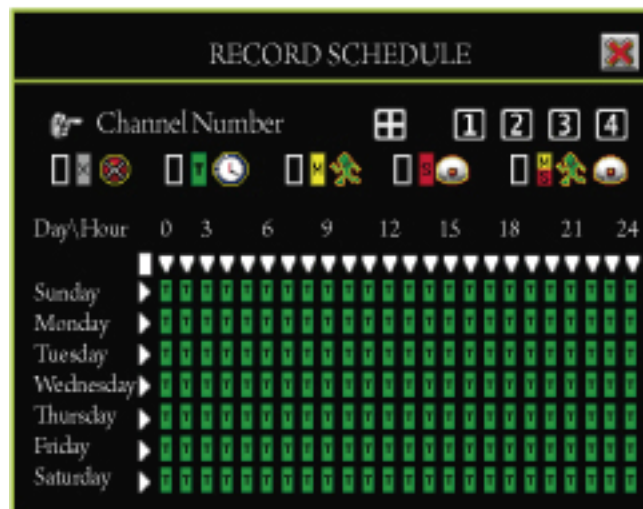


- **Higher Display Resolution**

MDR14E is equipped with a direct VGA output which gives you the benefit of using a less expensive LCD monitor for PC with a resolution up to 1280x1024 pixels.

- **Maximizes Recording Performance and Capability**

The recording frame rate can be adjusted independently each channel. On the other hand, the “Auto Balance” mode can automatically allocate the frame rate of each channel by load estimation.



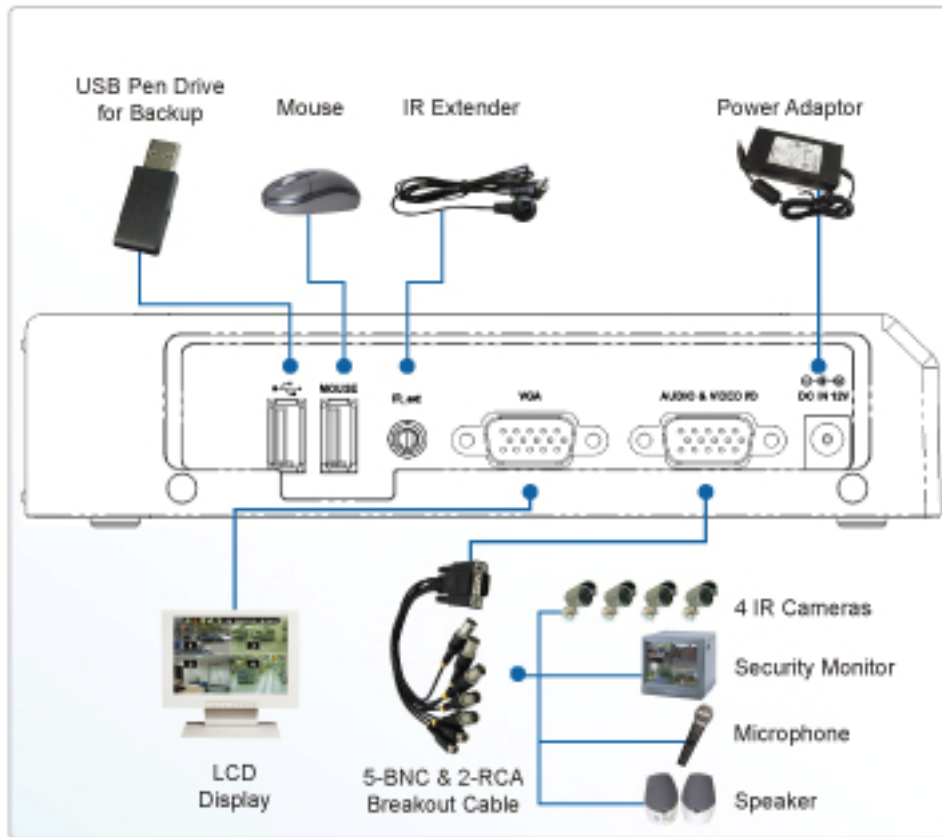
- **User-Friendly Graphic Interface**

The graphic on-screen display (OSD) menu offers users an easy and straightforward operation with the mouse or an optional IR remote control.

- **More Optional Features**

The MDR14E can be fastened on to your standard display. Another option is an additional VESA mounting.

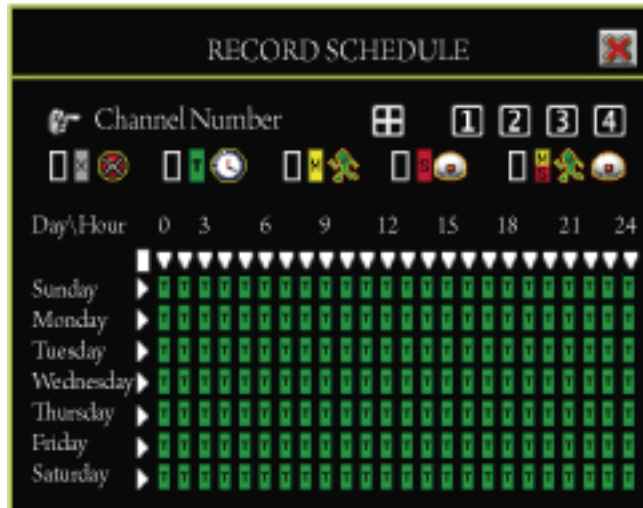
- **Peripheral Connection**



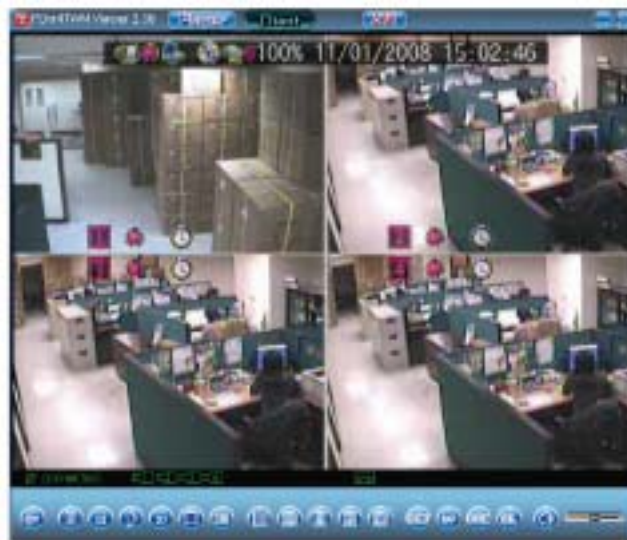
- **Multilayer Authentication for Maximum Security**



- Independent On-Demand Recording Scheduling for Each Channel



- PC Viewer for Data Backup and Playback



- USB 2.0 Port for Backup and Firmware Update



Specifications:

Model	MDR14E	
	NTSC	PAL
Video		
Video Compression	MJPEG	
Video Input	BNCx4	
Video Output	1-VGA/Out	
Display Resolution	640x448	640x544
Display Frame Rate	120fps	100fps
Display Division	Single / Sequence / Split (1/4)	
Audio		
Audio Input	1	
Audio Output	1	
Recording		
Recording Resolution	640x224	640x272
Recording Frame Rate (with Auto Balance Mode)	60fps	50fps
Recording Mode	Continuous / Schedule / Motion Detection	
Recording Quality	High / Normal / Low	
Search & Playback		
Search Mode	Time / Event	
Storage / Backup		
Storage Support	One Internal 2.5" SATA HDD (Max. Capacity Support: 1TB)	
Backup Device	USB stick	
Connector		
USB	USB2.0 Port x 1	
Mouse	Mouse Port (PS/2 Protocol) x 1	
I/O Connector		
Balun	Provide Balun*4 (4-Video/In, 1-Audio/In)	
Accessories		
Mouse	Yes (PS/2 Compatible USB Mouse)	
IR Remote Controller	Optional	
IR Extender	Optional	
VESA Mounting	Optional	
Others		
Power Supply	Input:AC100~240V, 50/60Hz Output:DC12V, 5A	
Dimension (WxHxD)	18.09cm x 4.19cm x 12.85cm	